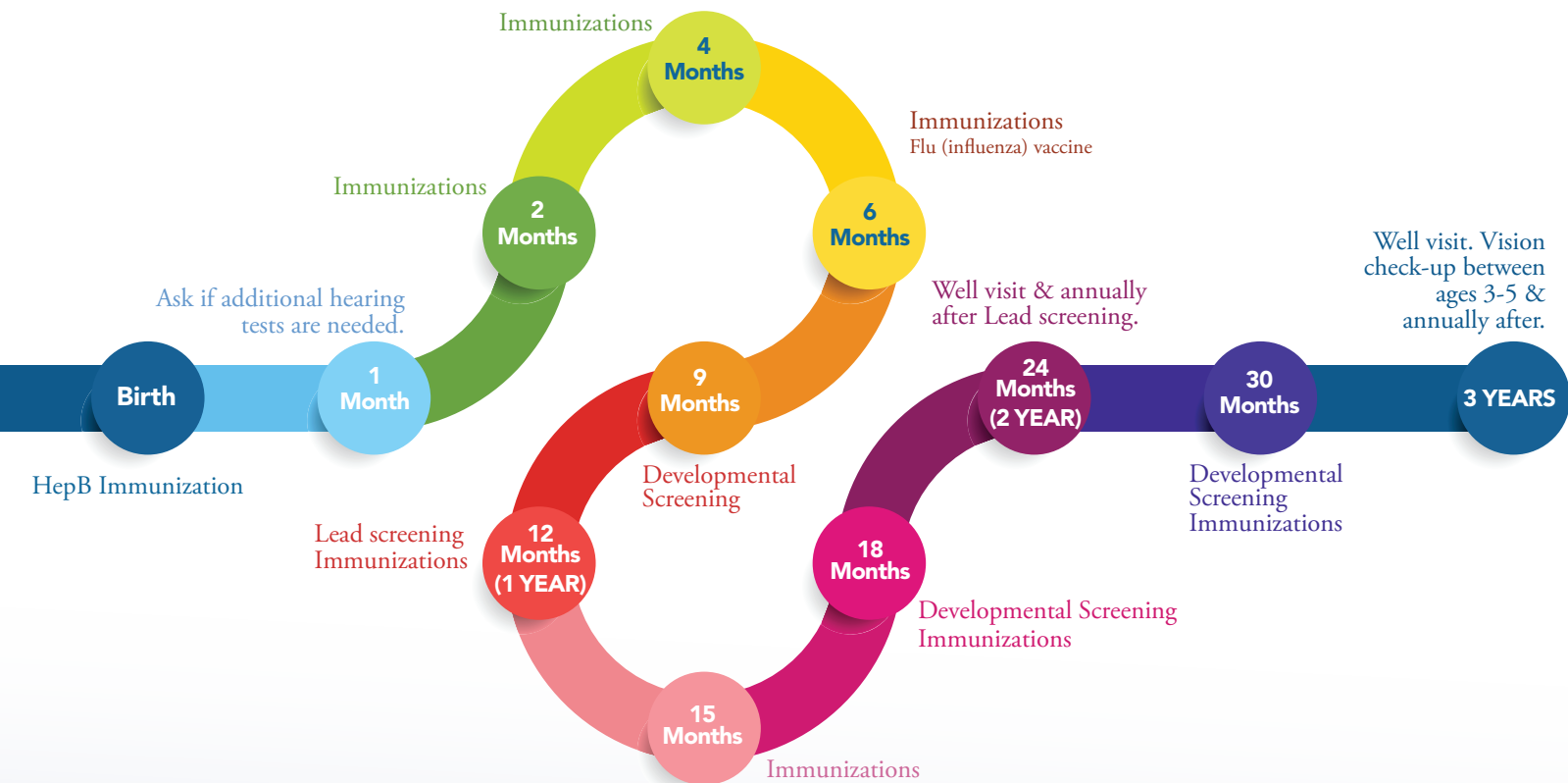


Well-Child Check-Ups

Birth to Three Years | Well Visit and Immunization Road Map



| Vaccine | Birth | 1 month | 2 months | 4 months | 6 months | 12 months | 15 months | 18 months | 19-23 months | 2-3 years |
|--|---|---------|----------|----------|----------|---|-----------|-----------|--------------|-----------|
| RSV (Respiratory syncytial virus) | 1 dose depending on maternal RSV vaccination status | | | | | 1 dose (8 through 19 months) | | | | |
| HepB (Hepatitis B) | 1 dose | 1 dose | | | 1 dose | | | | | |
| RV (Rotavirus) | | | 1 dose | 1 dose | 1 dose | | | | | |
| DTap (Tetanus, Diphtheria, Pertussis) | | | 1 dose | 1 dose | 1 dose | | 1 dose | | | |
| Hib (Haemophilus Influenzae Type B) | | | 1 dose | 1 dose | 1 dose | 1 dose | | | | |
| PCV (Pneumococcal) | | | 1 dose | 1 dose | 1 dose | 1 dose | | | | |
| IPV (Polio) | | | 1 dose | 1 dose | 1 dose | | | | | |
| Flu (Influenza) | | | | | | 2 doses in first year, then 1 dose annually | | | | |
| MMR (Measles, Mumps, Rubella) | | | | | | 1 dose | | | | |
| Varicella (Chickenpox) | | | | | | 1 dose | | | | |
| HepA (Hepatitis A) | | | | | | 2 doses (between 12 and 24 months) | | | | |
| Covid-19 | As recommended by age group | | | | | | | | | |